

# **Remote Backup Software**

## **User Manual**

UD.6L0202D1298A01

Thank you for purchasing our product. This manual applies to Remote Backup software, please read it carefully for the better use of this software. The contents in this manual are subject to change without notice.

## Contents

Chapter 1 Introduction .....	1
1.1 Overview .....	1
1.2 System Requirements.....	1
1.3 Conventions .....	1
1.4 Version Information .....	1
Chapter 2 GUI Introduction .....	2
Chapter 3 Configuration .....	3
3.1 Configuring General Settings.....	3
3.1.1 Configuring Auto Start .....	3
3.1.2 Configuring Local Disk.....	3
3.1.3 Configuring Email Notification.....	4
3.2 Configuring Device for Backup .....	4
3.2.1 Importing from Client .....	5
3.2.2 Adding a Device by IP Address or Domain.....	6
3.2.3 Adding a Device by HiDDNS.....	6
3.2.4 Editing/Deleting a Device .....	8
3.3 Configuring Backup Schedule .....	8
3.3.1 Adding a Schedule .....	9
3.3.2 Selecting Camera(s) for Schedule.....	9
3.3.3 Configuring Backup Time.....	10
Chapter 4 Remote Backup.....	13
4.1 Starting Auto Backup .....	13
4.2 Starting Manual Backup .....	14
4.3 Searching Backup Files .....	15
4.4 Log Search.....	16

# Chapter 1 Introduction

## 1.1 Overview

The Remote Backup Software is the client application specially developed for the backup of video files from the remote DVR/NVR device. It is also applicable to DVS with SATA hard disk, IP Camera and IP Dome with SD card.

## 1.2 System Requirements

**Operating System:** Microsoft Windows 7 / Windows 2008 32 / 64-bit  
Windows XP / Windows 2003 32-bit

**CPU:** Intel Pentium IV @ 3.0 GHz or above

**RAM:** 1G or above

**Video Card:** RADEON X700 Series

**Display:** 1024\*768 resolution or above


## 1.3 Conventions

Conventions as follows in this manual:

- The Remote Backup Software hereinafter is briefed as “Software”.
- *DVR/NVR, DVS, IP Camera and IP Dome* are all referred to as “Device”.
- *Click* refers to left click mouse.
- *Double click* refers to double left click mouse.

## 1.4 Version Information

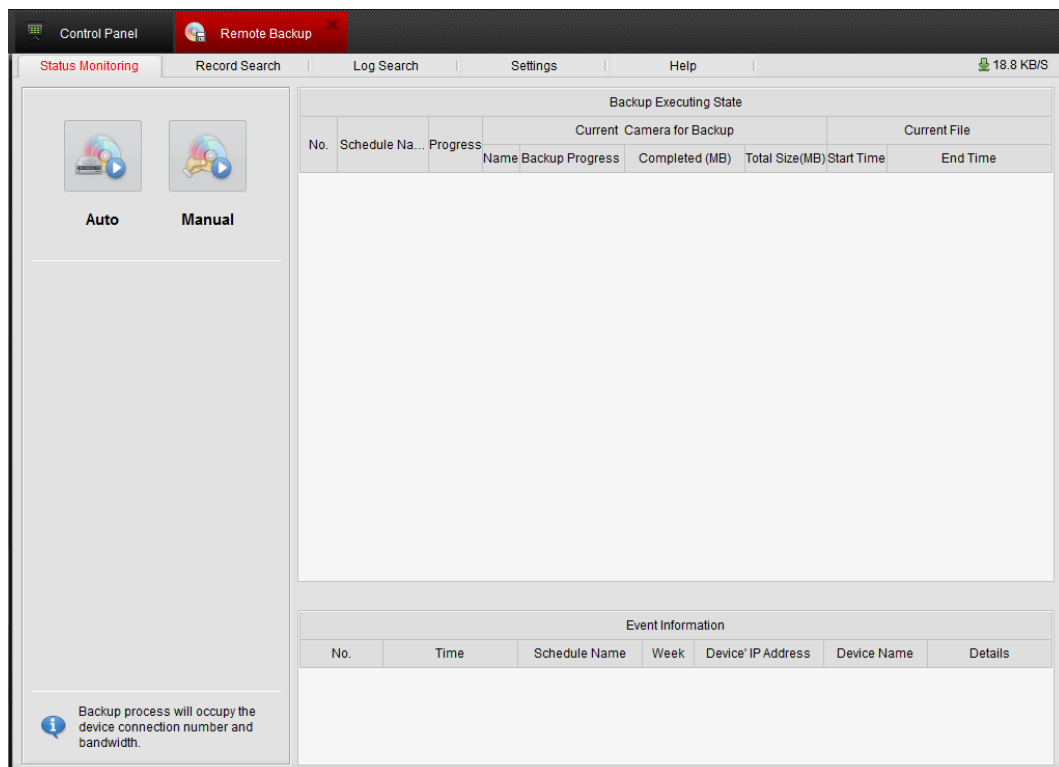


After installing the software, run the software and click  on the control panel to enter the Remote Backup interface.

Click the **Help > About** tab at the top to view the version information or click **Help > User Manual** to get the User Manual of the software.

## Chapter 2 GUI Introduction

The main interface of the software is shown below.



Description of the Main Interface:


**Status Monitoring:** View the information of all current ongoing backup task(s) and the status of each task.

**Record Search:** Search the backup files from local disk (s).

**Log Search:** View logs about operation and other information of this remote backup software.

**Settings:** Configure remote backup task(s), including settings of backup device(s), backup schedule and backup directory.

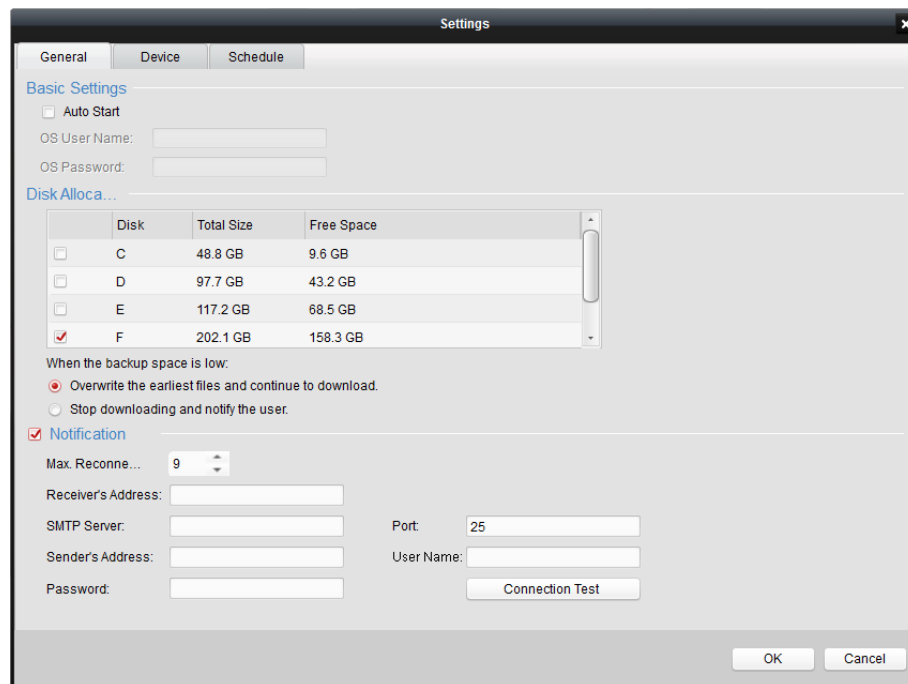
**Help:** View the version information and get the user manual of the software.

: Show the current Network Traffic information of the PC which is running the Remote Backup software.

## Chapter 3 Configuration

### 3.1 Configuring General Settings

Click **Settings > General** to enter the General Settings interface:

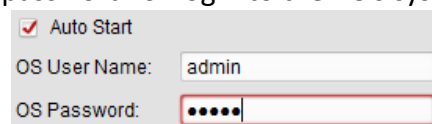


You can disable / enable Auto Start, select disk for backup and configure notification in this interface.

#### 3.1.1 Configuring Auto Start

If required, you can click the checkbox of **Auto Start** to enable the software to automatically start at the boot of the windows system.

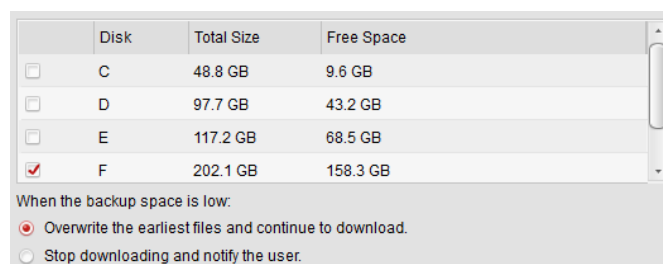
Input the user name and password for log into the PC's system.



#### 3.1.2 Configuring Local Disk

1. Select the local disk(s) for backup from the list.

**Note:** The available space of the selected disk must be more than 2GB. The backup schedule will restart automatically after the disk settings are modified.



2. Select the processing mode when the disk space is low (less than 2GB). Two modes are selectable.

### 3.1.3 Configuring Email Notification

If you want to notify the user with email when the reconnection between the software and the device for backup has timed out, you should configure the following settings:

**Max. Reconnection:** The maximum times of reconnection between the backup software and the device for backup. 0~99 is selectable, and the default settings is 9.

**Receiver's Address:** The Email address of user to be notified.

**SMTP Server:** The SMTP Server IP address or host name (e.g., smtp.263xmail.com).

**Port:** The SMTP port. The default TCP/IP port used for SMTP is 25.

**Sender's Address:** The Email address of sender.

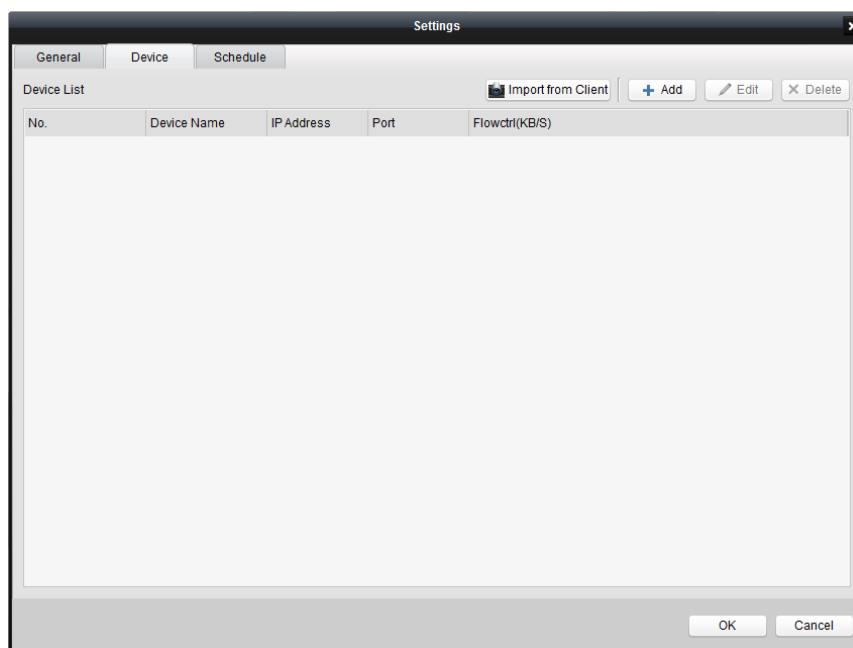
**Username:** The username for login to the sender's Email.

**Password:** The password for login to the sender's Email.

**Connection Test:** Test the Email settings.

## 3.2 Configuring Device for Backup

Click **Settings > Device** to enter the **Device Management** interface:



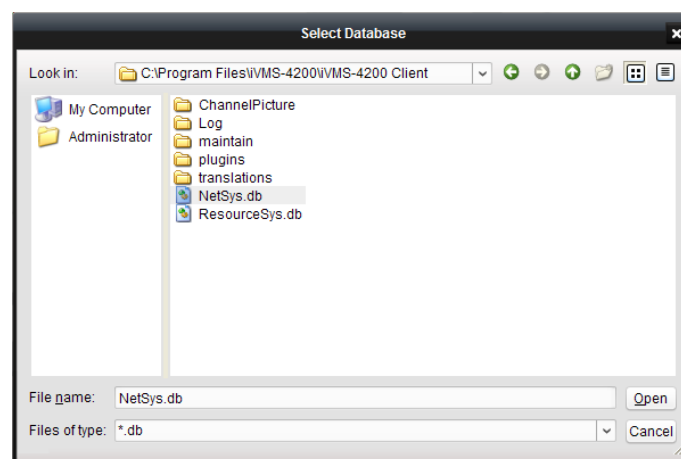
### 3.2.1 Importing from Client

**Purpose:**

You can also import the information of device resources added to the iVMS-4200 client software.

**Steps:**


1. Click and the corresponding interface shows up.
2. Browse to select the config file (NetSys.db).
3. Click to load the device information.



4. Click to import the device resources from the iVMS-4200 client software.

### 3.2.2 Adding a Device by IP Address or Domain

**Steps:**

1. Click the  **Add** tab to enter the Add Device interface.
2. Select the Method to **IP Mode**, or **Domain Mode**.
3. Configure the corresponding settings for the selected mode.

**Device Name:** Edit the device name as desired.

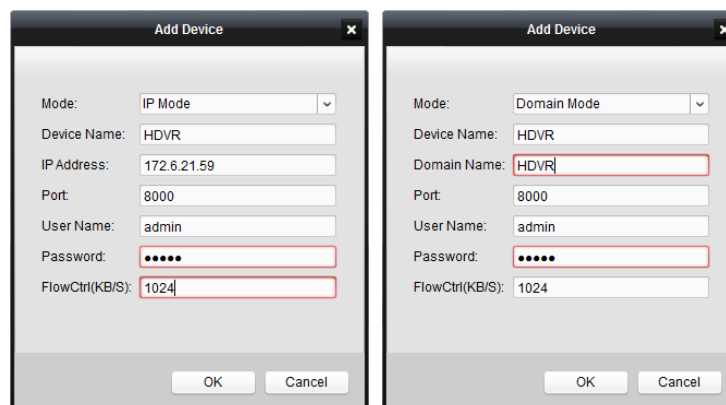
**IP Address/Domain:** The IP address/domain of the device.

**Port:** The port No. (default: 8000).

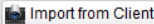
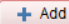

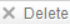
**Username:** The user name for login to the device (default: admin).

**Password:** The user name for login to the device (default: 12345).

**FlowCtrl** (optional): Define the max. bitrate of backup if required.



4. The successfully added device will be displayed on the Device List.

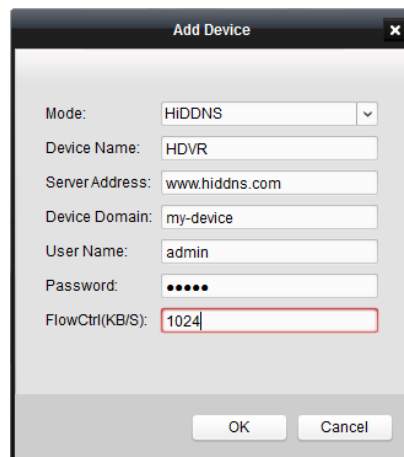
General    Device    Schedule					
Device List					
   					
No.	Device Name	IP Address	Port	Flowctrl(KB/S)	
1	HDVR	172.6.21.59	8000	1024	

**Note:** Up to 1024 devices can be added.

### 3.2.3 Adding a Device by HiDDNS

**Steps:**

1. Click the  **Add** tab to enter the Add Device interface.
2. Select the Method to **HiDDNS**.

A dialog box titled "Add Device" with a close button (X) in the top right corner. It contains several input fields: "Mode" (a dropdown menu showing "HiDDNS"), "Device Name" (text box with "HDVR"), "Server Address" (text box with "www.hiddns.com"), "Device Domain" (text box with "my-device"), "User Name" (text box with "admin"), "Password" (text box with masked characters "•••••"), and "FlowCtrl(KB/S)" (text box with "1024"). At the bottom are "OK" and "Cancel" buttons.

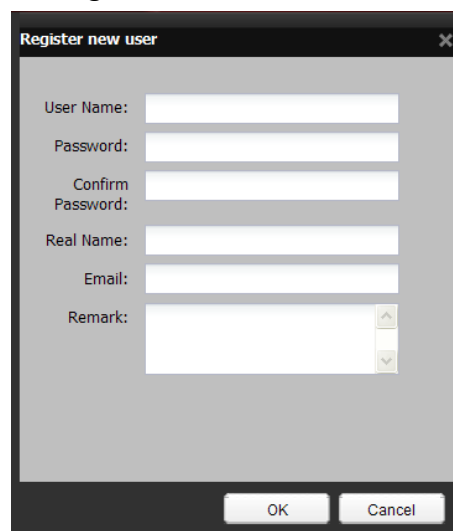
3. Enter the Device Name as desired.  
You can register the device domain name in the HiDDNS server first and then enter it in the textbox.

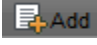
4. Enter the Server Address of the HiDDNS (default: [www.hiddns.com](http://www.hiddns.com)).

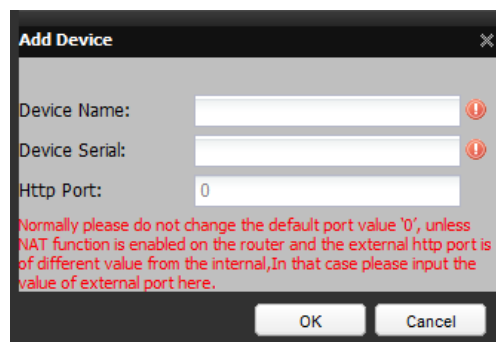
**Register the device on the HiDDNS server.**

**Steps:**

- 1) Go to the HiDDNS website: [www.hiddns.com](http://www.hiddns.com).
- 2) Click the [Register new user](#) tab to register an account if you do not have one and use the account to log in.

A dialog box titled "Register new user" with a close button (X) in the top right corner. It contains several input fields: "User Name:", "Password:", "Confirm Password:", "Real Name:", "Email:", and "Remark:" (a text area with up/down arrows). At the bottom are "OK" and "Cancel" buttons.

- 3) In the Device Management interface, click the icon  to register the device.



**Add Device**

Device Name:

Device Serial:

Http Port:

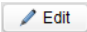
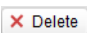
Normally please do not change the default port value '0', unless NAT function is enabled on the router and the external http port is of different value from the internal, In that case please input the value of external port here.

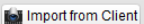

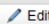
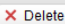
OK Cancel

**Note:** Only lower-case English alphabet, numeric and '-' can be used in the alias of the device and the alias must be started with letter of the lower-case English alphabet.

5. Enter the Device Domain, login User Name and Password of the device, and FlowCtrl (optional) in the text field.
6. Click **Confirm** to add the device.

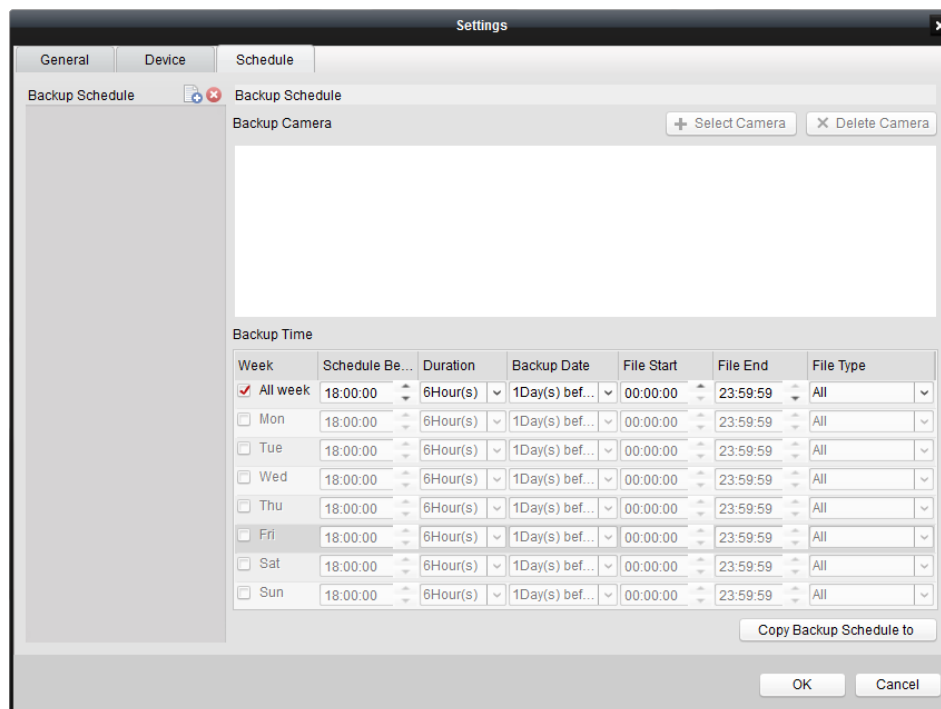
### 3.2.4 Editing/Deleting a Device

You can select the device from the list and click the  button to modify the device information, or click the  button to remove the device from the list.

General    Device    Schedule				
Device List				
   				
No.	Device Name	IP Address	Port	Flowctrl(KB/S)
1	HDVR	172.6.21.59	8000	1024

## 3.3 Configuring Backup Schedule

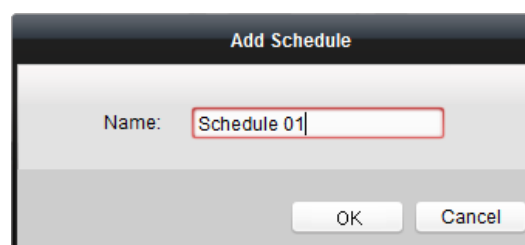
**Note:** The backup schedule will restart automatically after being modified.  
Click **Settings > Schedule** tab to enter the Schedule Settings interface:

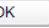


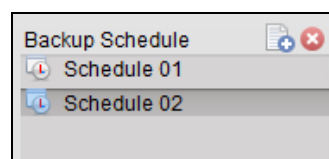
### 3.3.1 Adding a Schedule

**Steps:**

1. Click the  icon beside **Backup Plan** to enter the Add Schedule interface:



2. Edit the schedule name and click .

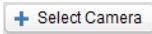


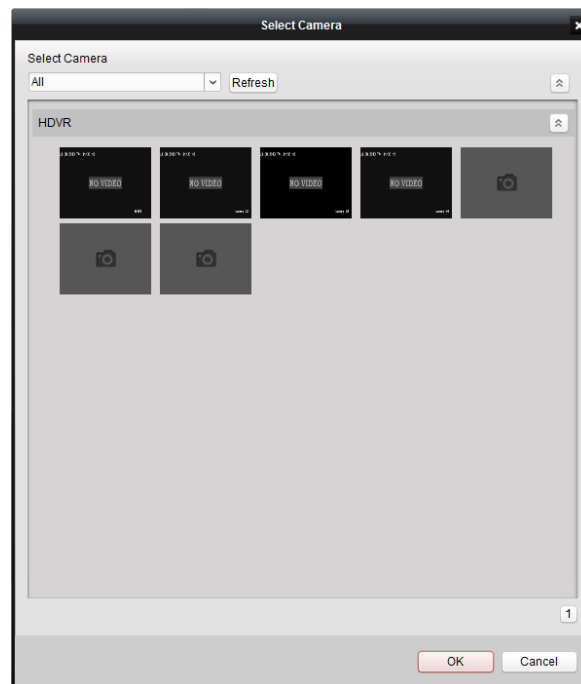
3. The successfully added schedules will be displayed on the list of Backup Schedule.

**Note:** Up to 32 backup schedules can be added.

### 3.3.2 Selecting Camera(s) for Schedule

**Steps:**

1. Select a schedule from the list of Backup Plan.
2. Click the  button to enter the Select Camera interface:



3. Select the device from the drop-down list, or select **All** to select all devices for the current schedule.
4. Select the camera(s) from the window display panel. The selected camera will be shown with yellow frame.  
You can press and hold the *Ctrl* key and use the mouse to select multiple cameras.
5. Click  to finish adding cameras for the current schedule. The successfully added cameras will be displayed on the list of **Backup Camera**.

**Note:** Up to 32 cameras can be configured for each schedule.



You can select the added camera from the list and then click the  button to delete it.

### 3.3.3 Configuring Backup Time

You can configure the backup time for each schedule.

**Steps:**

1. Select the day (s) of a week click **All week** to configure the schedule.

Backup Time						
Week	Schedule Be...	Duration	Backup Date	File Start	File End	File Type
<input checked="" type="checkbox"/> All week	18:00:00	6Hour(s)	1Day(s) bef...	06:00:00	23:59:59	Schedule
<input type="checkbox"/> Mon	18:00:00	6Hour(s)	1Day(s) bef...	00:00:00	23:59:59	All
<input type="checkbox"/> Tue	18:00:00	6Hour(s)	1Day(s) bef...	00:00:00	23:59:59	All
<input type="checkbox"/> Wed	18:00:00	6Hour(s)	1Day(s) bef...	00:00:00	23:59:59	All
<input type="checkbox"/> Thu	18:00:00	6Hour(s)	1Day(s) bef...	00:00:00	23:59:59	All
<input type="checkbox"/> Fri	18:00:00	6Hour(s)	1Day(s) bef...	00:00:00	23:59:59	All
<input type="checkbox"/> Sat	18:00:00	6Hour(s)	1Day(s) bef...	00:00:00	23:59:59	All
<input type="checkbox"/> Sun	18:00:00	6Hour(s)	1Day(s) bef...	00:00:00	23:59:59	All

- Configure the schedule for each day.

**Schedule Begin:** The start time of backup task.

**Duration:** The duration of backup task.

**Note:** The duration will keep the same when the system time is changed during the process of backing up.

**Backup Date:** The date of the recorded file for backup (0~30Day before). When the Backup Date is set to "0Day before", the backup schedule is valid for the current day only.

**File Start:** The start time of the recorded file for backup.

**File End:** The end time of the recorded file for backup.

**File Type:** Select the type of recorded file to Motion Detection, Schedule, Manual or Alarm.

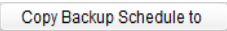
**Note:** The time set in **Schedule Begin** must be later than that in **File Start**.

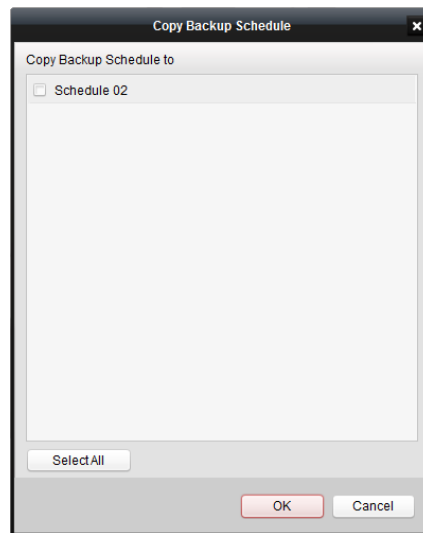
**Example:**

Suppose the schedule shown on the above figure was configured on 2012-01-04, then at 18:00:00 the software would start to back up the video files (scheduled) of all cameras recorded between 6:00:00 and 17:59:59 on 2012-01-02. The backup task stopped at 23:00:00 even if the backup of all recorded files was not finished.

At 18:00:00 on 2012-01-05, before starting to back up the video files recorded between 6:00:00 and 17:59:59 on 2012-01-03, the software would continue to back up the remaining video files which had not been backed up on the previous day until it was finished.

- Copy the backup time of current schedule to other schedules.

If you want to configure the other schedules with the same backup time of the current schedule, click the  button to enter the following interface:

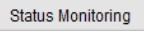


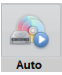

## Chapter 4 Remote Backup

### 4.1 Starting Auto Backup

**Purpose:**

When the Auto Backup is enabled, the software will automatically start the backup task upon the configured schedule.

Click the  tab on the main interface to enter the Status Monitoring interface.

Click the  icon to start the auto backup task, and the icon will become . You may click it again to stop backing up.

The current status during auto backup can be monitored from the software. Refer to the following interface:

**Auto/Manual:** Select backup mode to Auto/Manual.

By default, the software is backing up in Auto mode. And when the Manual backup is finished, the software will automatically switch to the Auto mode.

**Backup Execution State:** Display the information of current backup task, including the schedule name, progress, information of current camera for backup, and the start time and end time of the recorded files to be backed up.

**Event Information:** Event information of exceptions during the backup, including the occurring time, schedule name, device IP and event details.

**Backup Details:** Detailed information of the current backup task. Refer to the following table:

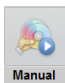
Item	Description
Backup Mode	The current backup mode (Auto).
Backup Duration	The duration of the ongoing backup (from the start time of backup to the current time).
Number of Schedules	The number of simultaneous backup schedules
File Size for Backup (today)	The total size of the recorded files for backup today.
Completed Size (today)	The size of recorded files which have been backed up
Completed Percent (today)	The percent of recorded files which have been backed up today.
Expired File Size	The total size of the expiring recorded files (of which the backup was not finished yesterday)
Completed Size of Expired Files	The size of the expiring recorded files which have been backed up today.

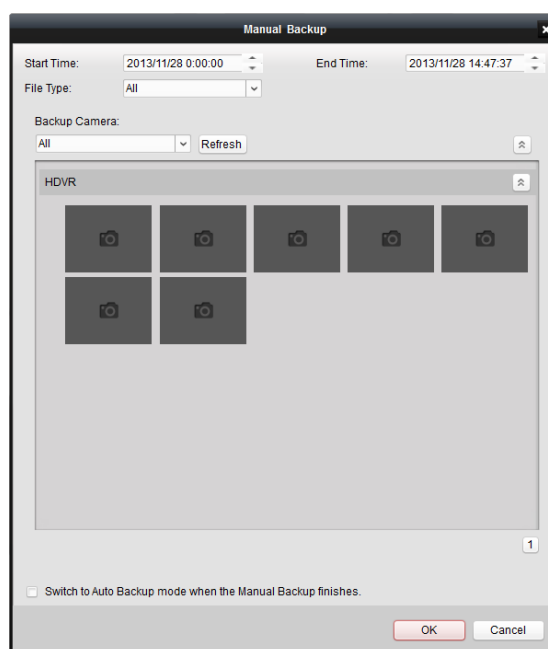
Completed Percent of Expired Files	The percent of expiring recorded files which have been backed up today.
------------------------------------	---

**Note:** The expiring files refer to the recorded files of which the backup was not completed on the previous day according to the backup schedule configuration. The software will continue to handle the uncompleted task (s) next time when it starts before handling the backup task (s) of today.

## 4.2 Starting Manual Backup

### Steps:

1. On the Status Monitoring interface, click the  icon to enter the Manual Backup interface:



2. Set the start time/end time and file type of the recorded files for backup.
3. Select the camera (s) of the connected device (s) for backup from the drop-down list or by clicking the display window (s) on the panel.  
You can press and hold the *Ctrl* key and use the mouse to select multiple cameras.
4. The auto backup will be terminated after the manual backup starts. If you want to enable the auto backup when the manual backup is finished, click the checkbox of the "Switch to Auto Backup mode when the Manual Backup is finished" (optional).
5. Click  to start manual backup.

**Note:** Up to 32 cameras can be configured for manual backup.

The current status during manual backup can be monitored from the software. Refer

to the following interface:



Please refer to *Chapter 4.1 Starting Auto Backup* for the description of interface.

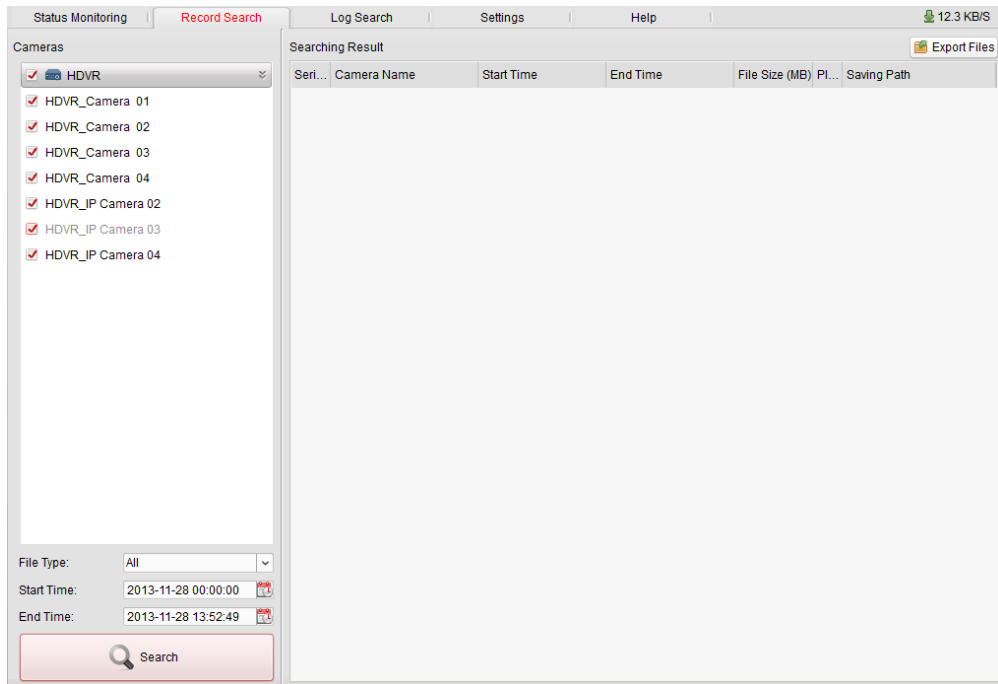
Description of Backup Details:

Item	Description
Backup Mode	The current backup mode (Manual).
Backup Duration	The duration of the ongoing backup (from the start time of backup to the current time).
Start Time	The start time of the recorded files for backup.
End Time	The end time of the recorded files for backup.
File Type	The type of recorded files for backup
Backup Camera	List of all cameras for backup


## 4.3 Searching Backup Files

### Steps:

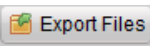
1. Click the **Record Search** tab on the main interface to enter the Record Search interface:

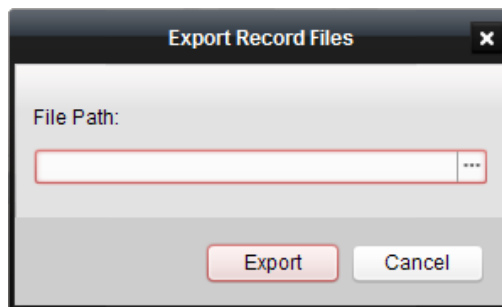


2. Select the camera(s), file type, and the start time and end time of the file.
3. Click **Search** to search the recorded files which have been backed up on local disk (s). The searched results will be displayed on the list.

You can select an item from the list and click the  button to play the selected video file.

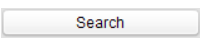
Or you can double click the selected item from the list to locate its saving directory.

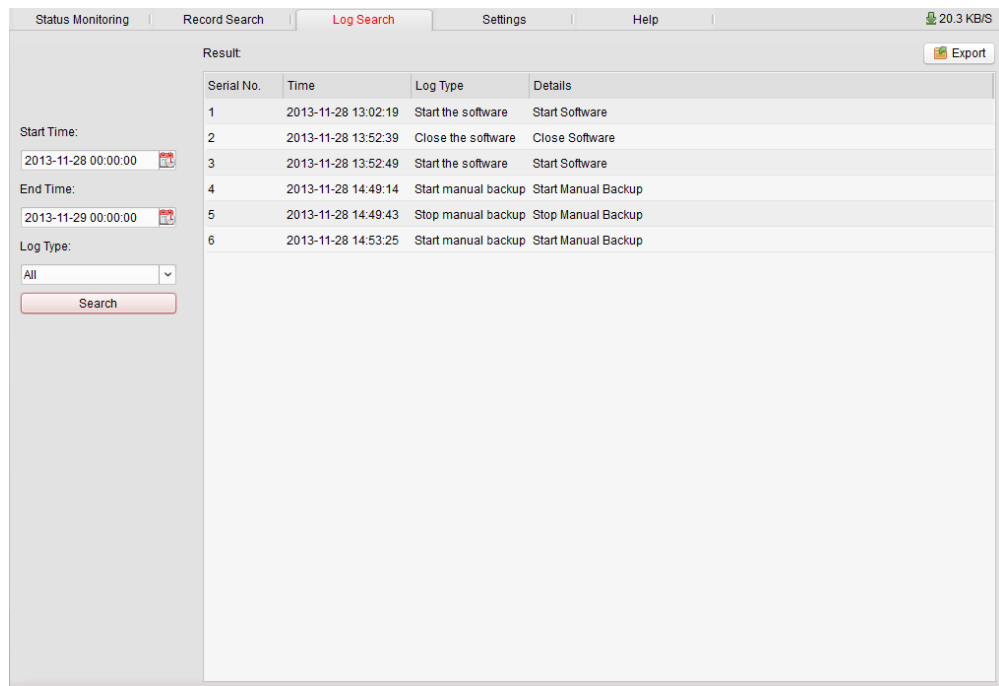
You can also select a file from the list and click the  button to export the selected video files to defined directory.




## 4.4 Log Search

Click the  tab on the main interface to enter the Log Search interface:

Set the start time, end time and the log type, and then click . The matched log files of the software will be displayed on the list.



You can select the log files from the list and click the  button to export the files (.xml) to local directory.